

Grower Mobile

Field-Ready Tools for Your Operation



Your crop insurance. Your fields. Your data.
All in one place—right from your phone.

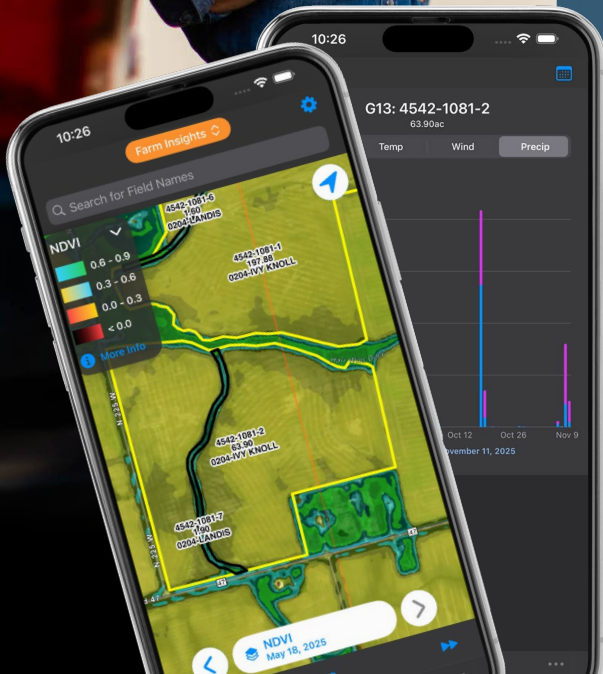
The Grower Mobile app was built with farmers in mind—giving quick access to the tools and information farmers need to stay organized, save time and keep their operations running smoothly.

From reporting acres to tracking crop conditions, Grower Mobile keeps insureds connected to their policy—and agent—every step of the way.

Why Grower Mobile?

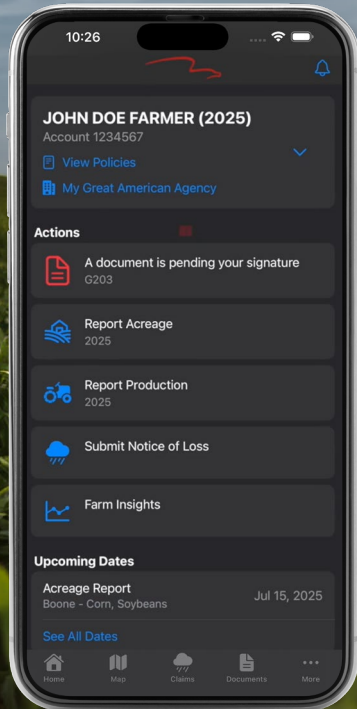
- ✦ Access policy info anytime, anywhere
- ✦ Share data directly from the field
- ✦ Stay ahead of deadlines with built-in alerts
- ✦ Make faster, more informed decisions with field-level weather and crop health data

American Owned



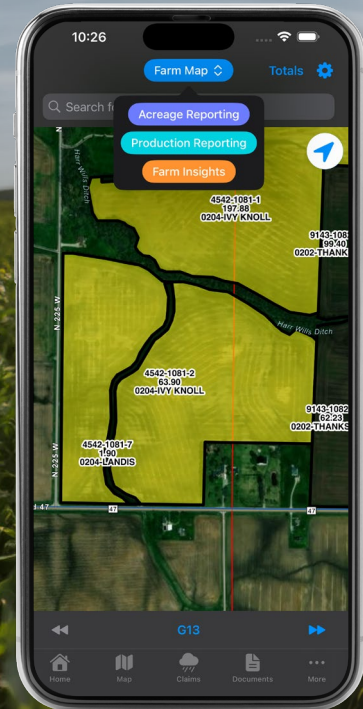
Powerful Tools on Demand

All-in-One Home Screen



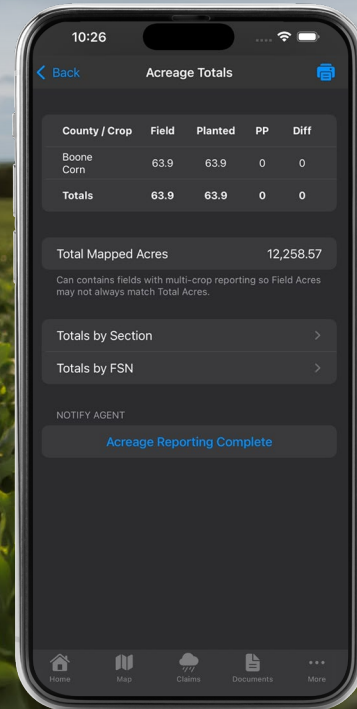
- View key deadlines like planting, billing and sales closing dates
- Receive alerts for signatures and action items
- Access agent and support team contact information

Access Your Field Maps



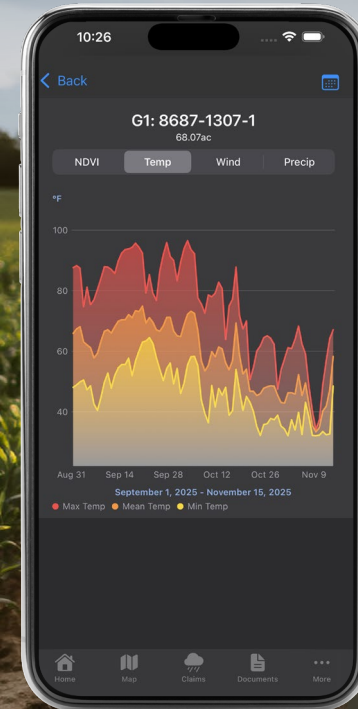
- View field maps, acreage and yield history
- Search and navigate fields with ease
- Customize layers such as satellite imagery and boundaries

Report Acreage & Production



- Submit planting and harvest data directly to your agent
- Report multiple fields at once, saving time
- Support accuracy with built-in calculations

Farm Insights



- Monitor crop health data on your fields
- Track weather conditions such as rainfall, temperature and wind
- Review trends over time to support informed decisions

Streamline Everyday Tasks

Easy Claims & Payments Process

- Submit a notice of loss directly in the app
- Track claim status in real time
- Enroll in Direct Deposit for faster payments

Access Documents Anytime

- View policy documents 24/7
- Sign forms quickly with e-sign
- Upload and store important files

Built for Collaboration

- Share access with key individuals
- Keep the team aligned while protecting sensitive information

More Tools at Your Fingertips

- View accounting details and billing info
- Track load logs during harvest
- Manage operations more efficiently—all in one app



Grower Mobile

Simple. Smart. Always On.



[Download via
Apple App Store](#)



[Download via
Google Play](#)

Getting started is simple:

1. The agent adds the insured's mobile number to the policy.
2. Farmers download Grower Mobile from the App Store.
3. Log in to access powerful tools.

In just a few taps, farmers unlock tools designed to help them farm smarter and stay connected.

For more details—and to watch step-by-step videos on how to get the most out of Grower Mobile—visit [GreatAmericanCrop.com](https://www.GreatAmericanCrop.com).

